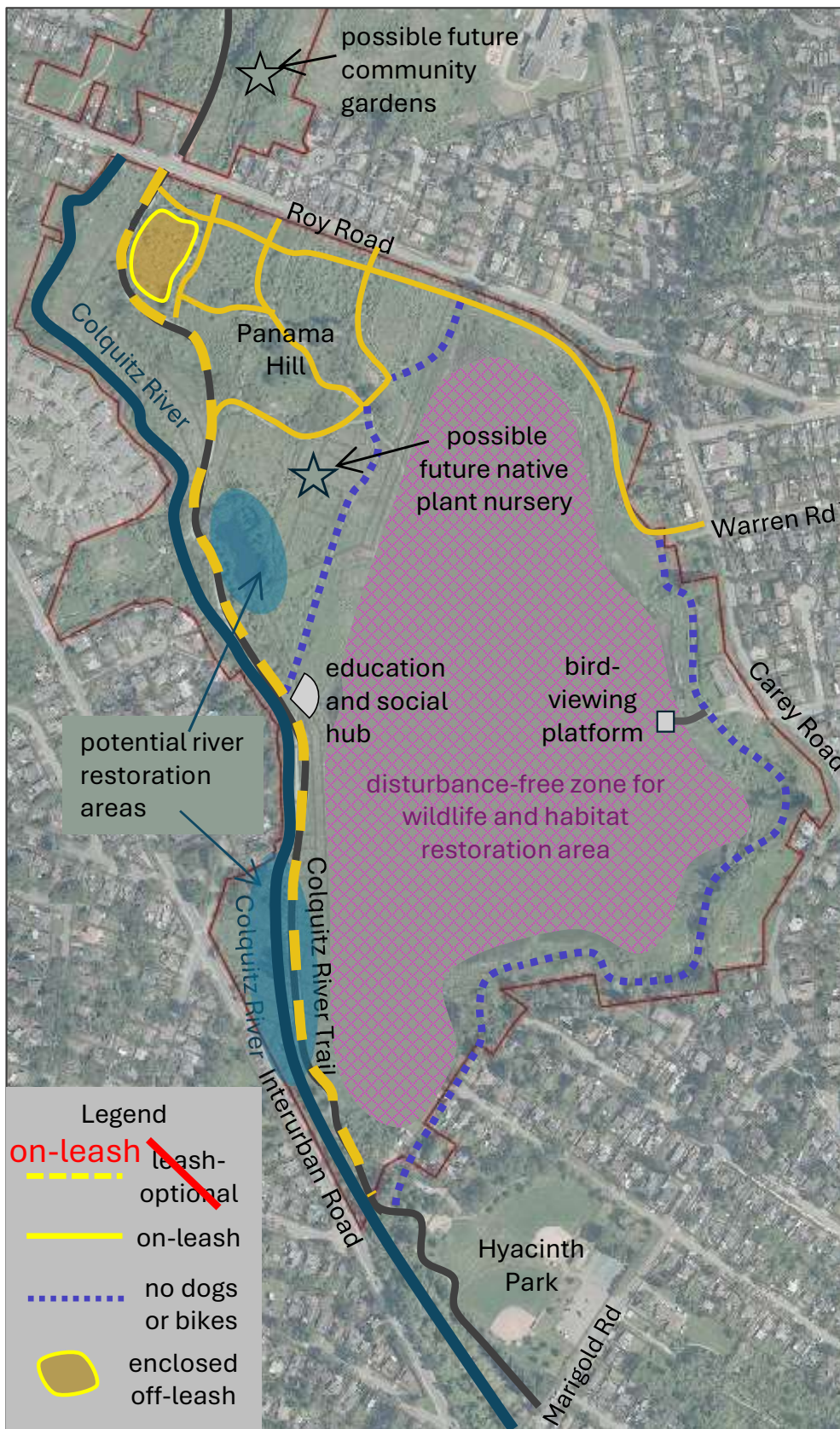


Panama Flats Updated Concept Plan - 2025



Highlights

First Nations:

Continue conversations with Nations to reflect history and values on-site

Biodiversity & Conservation:

- Disturbance-free zone
- Preserve wildlife habitat
- Protect sensitive areas
- No dogs or cyclists on perimeter trail
- River & habitat restorations
- Address invasive plants throughout

Storm water Management:

- Maintain function
- Explore potential to improve quality and quantity of water on flats

Recreation:

- Year-round trails, loop options & neighbourhood connections
- Dogs leash-optional and on-leash options
- Cyclists on Colquitz River Trail
- Educational signage
- Bird-viewing areas
- Social hub

Small-scale Agriculture:

- Receive community-led proposals north of Roy Rd

Neighbourhood Impact

- Control odour
- Control invasive plants

On Feb 9, 2026, Council approved changes to the Animals Bylaw to require dogs to be on leash, on trails only, at all times.